

RSP

RiverOak Strategic Partners

4.11

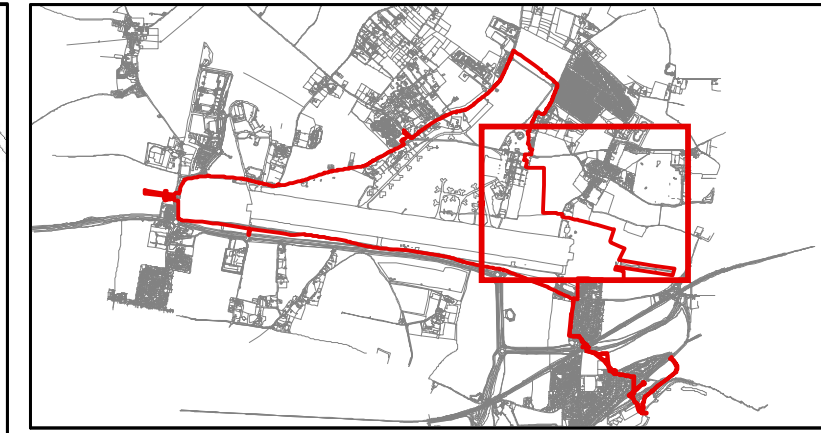
Habitats of Protected Species, Important Habitats or Other Diversity Features and Waterbodies in a River Basin Management Plans

TR020002/APP/4.11

Project Name: Manston Airport Development Consent Order

Regulation: Regulation 5(2)(l)(ii) and (iii) of the Infrastructure Planning (Applications: Prescribed Forms and Procedure) Regulations 2009, as amended

Date: July 2018



Key Plan
Scale: NTS

- KEY TO TARGET NOTES:**
- 13. Tank (B12) surrounded by scrub – bramble, elder, rose sp., with some tall ruderal
 - 14. Bramble scrub edges to hard standing
 - 15. Arable comprised of oil-seed rape stubble
 - 16. Earth mound
 - 17. Concrete rubble
 - 18. Line of conifers
 - 19. 20 metre length of garden privet hedge
 - 23. Spoil in piles and also banked against fence
 - 24. Scrub along perimeter fence
 - 25. Trees: three cherry and a silver birch within ephemeral short perennial area
 - 26. Areas of gravel shingle within the hardstanding north of building B1

- KEY**
- Order Limits
 - Water Framework Directive river water body catchment area (RWCA)
 - Scrub - dense/continuous
 - Scrub - scattered
 - Neutral grassland - semi-improved
 - Poor semi-improved grassland
 - Tall ruderal
 - Arable
 - Ephemeral/short perennial
 - Buildings
 - Bare ground
 - Hardstanding
 - Fence
 - ! Parkland and scattered trees-broad-leaved
 - 3 Target note
 - Sheet continuation line

- Notes**
1. OS Data obtained from emapsite™ May 2017: © Crown copyright and database rights 2017 Ordnance Survey 0100031673
 2. This drawing is scaled at paper size A1, therefore any prints taken at smaller sizes will affect accuracy of the measurement units and should not be scaled against. Enlargements are not to scale.
 3. The area shown on this plan falls within the River Stour District Catchment Area and the River Stour Management Catchment Area
-

Rev	Description	By	Ckd	Apr	Date
P01	Add revision changes.	-	-	-	06/04/2019

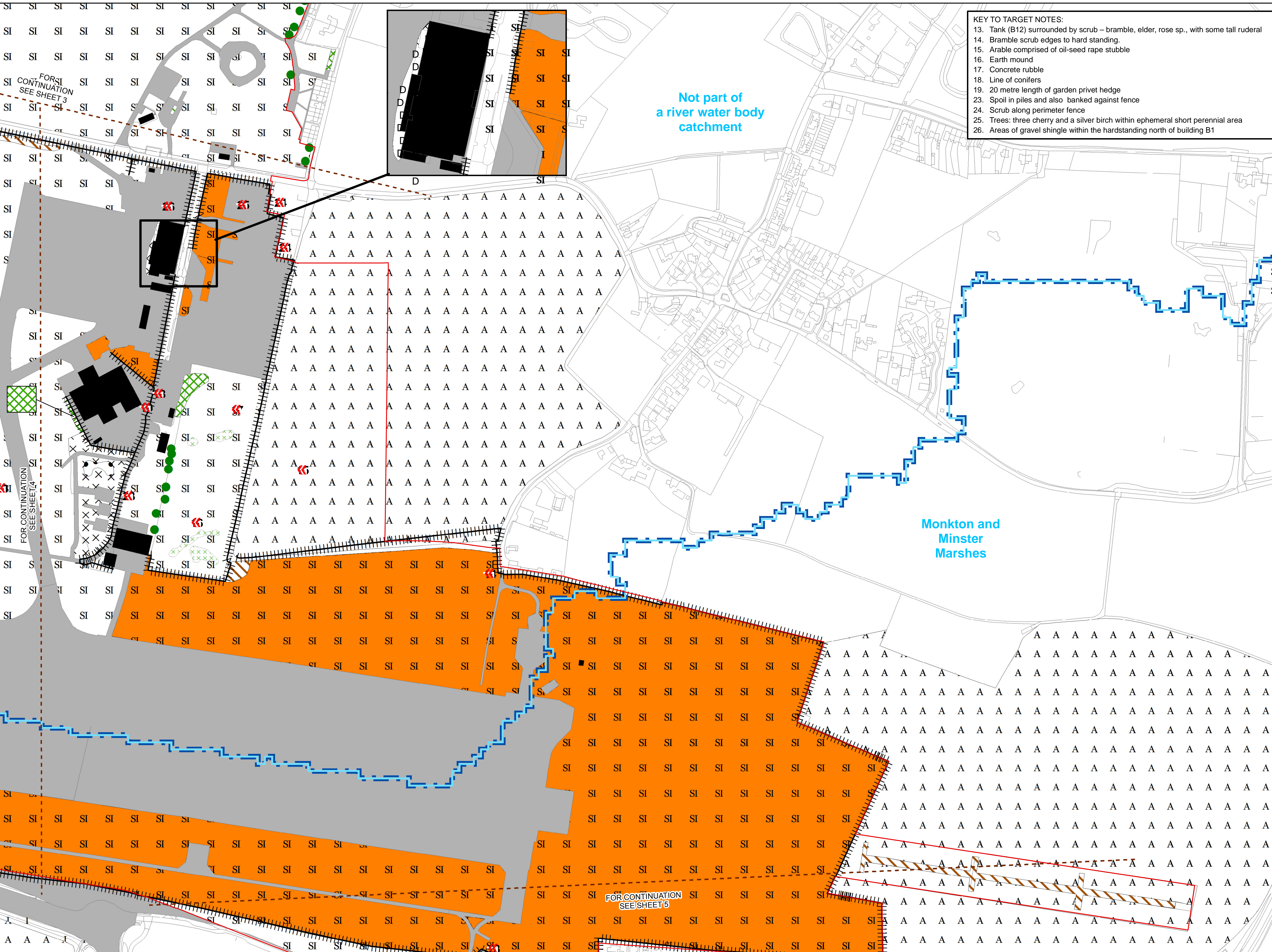
Project MANSTON AIRPORT DEVELOPMENT CONSENT ORDER

Title HABITATS OF PROTECTED SPECIES, IMPORTANT HABITATS OR OTHER DIVERSITY FEATURES AND WATER BODIES IN A RIVER BASIN MANAGEMENT PLAN – PLANS REGULATIONS 5(2)(I)(ii) & (iii) SHEET 4 of 5 THANET DISTRICT COUNCIL

Document Number	Revision		
NK018417 - WSP - B01 - 01 - DR - S - 001	-		
Project Number Originator - Zone - Level - Type - Role - Drawing Number			
Application Number - TR020002			
Scale	Sheet Size	Sheet No	Status
1:2,500	A1	4 of 5	S. 56

Not part of a river water body catchment

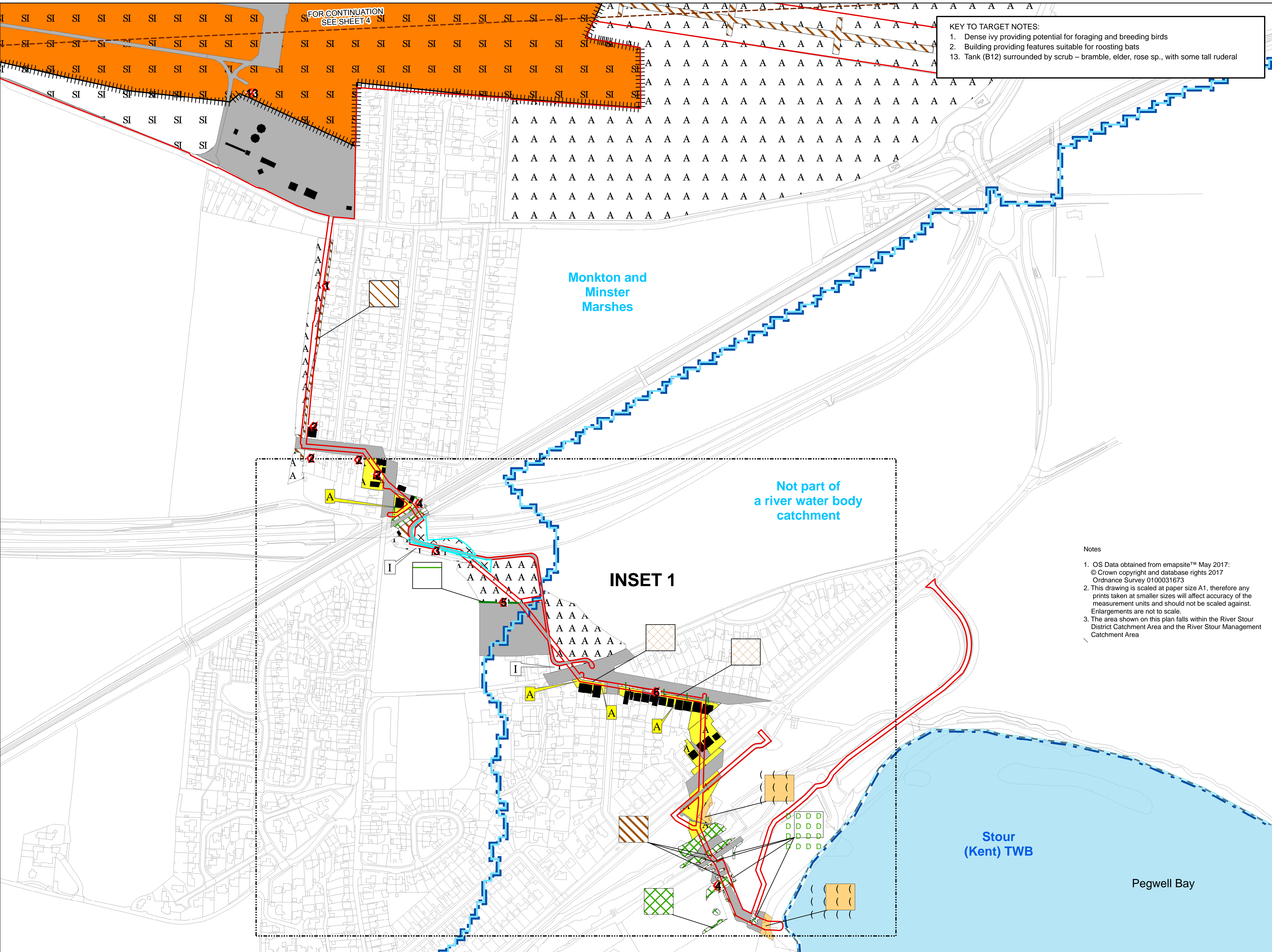
Monkton and Minster Marshes



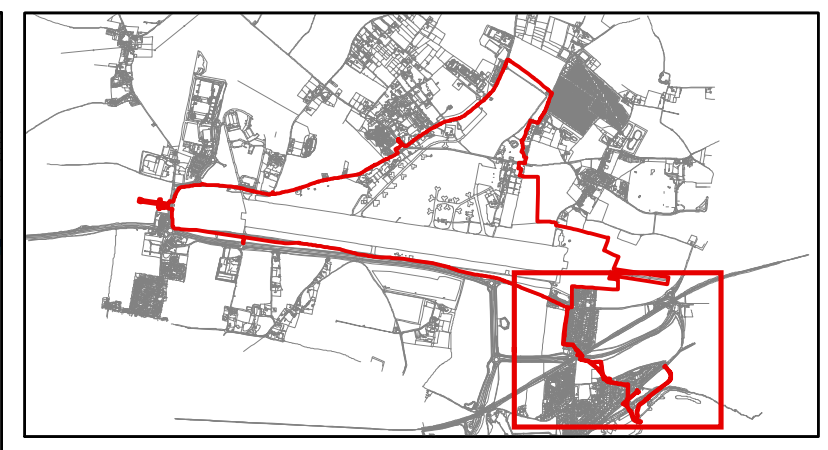
FOR CONTINUATION SEE SHEET 3

FOR CONTINUATION SEE SHEET 4

FOR CONTINUATION SEE SHEET 5



KEY TO TARGET NOTES:
 1. Dense ivy providing potential for foraging and breeding birds
 2. Building providing features suitable for roosting bats
 3. Tank (B12) surrounded by scrub – bramble, elder, rose sp., with some tall ruderal



Key Plan
 Scale: NTS

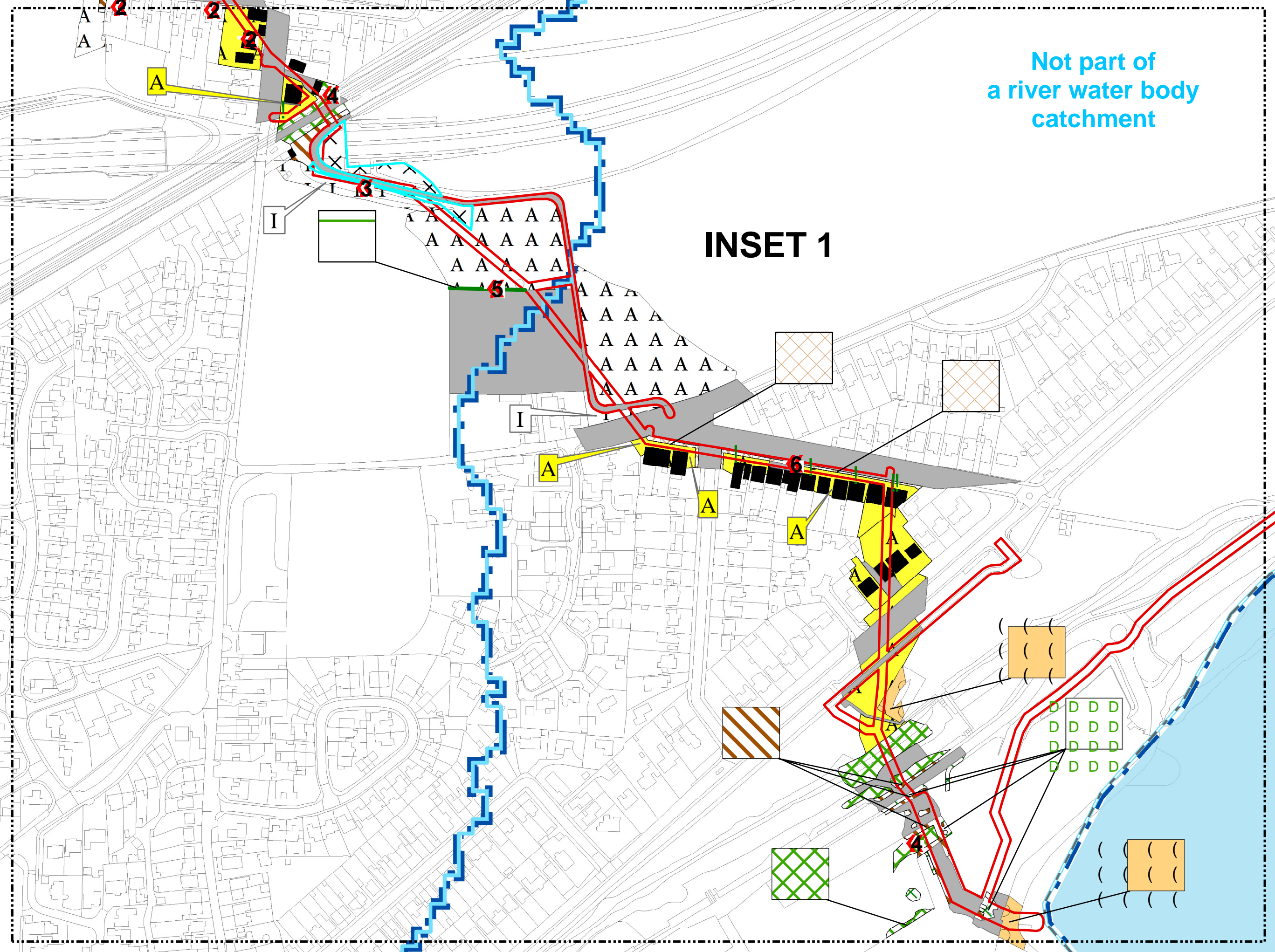
KEY

- Order Limits
- Inset
- Water Framework Directive river water body catchment area (RWCA)
- Water Framework Directive transitional water body (TWB)
- Scrub - dense/continuous
- Scrub - scattered
- Neutral grassland - semi-improved
- Poor semi-improved grassland
- Improved grassland
- Tall ruderal
- Arable
- Amenity grassland
- Ephemeral/short perennial
- Introduced shrub
- Shingles/cobbles
- Buildings
- Hardstanding
- Fence
- Intact hedge native species poor
- Parkland and scattered trees-broad-leaved
- 3 Target note
- Sheet continuation line

0 25 50 100 150 200 Meters

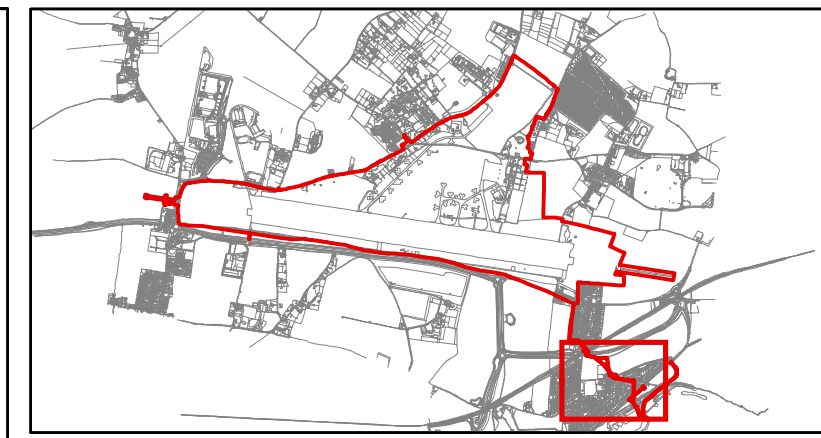
Notes

1. OS Data obtained from emapsite™ May 2017. © Crown copyright and database rights 2017 Ordnance Survey 010031673
2. This drawing is scaled at paper size A1, therefore any prints taken at smaller sizes will affect accuracy of the measurement units and should not be scaled against. Enlargements are not to scale.
3. The area shown on this plan falls within the River Stour District Catchment Area and the River Stour Management Catchment Area



INSET 1

P01 Add revision changes.			
Rev	Description	By	Date
Project MANSTON AIRPORT DEVELOPMENT CONSENT ORDER			
Title HABITATS OF PROTECTED SPECIES, IMPORTANT HABITATS OR OTHER DIVERSITY FEATURES AND WATER BODIES IN A RIVER BASIN MANAGEMENT PLAN – PLANS REGULATIONS 5(2)(I)(ii) & (iii) SHEET 5 OF 5 THANET DISTRICT COUNCIL			
Document Number		Revision	
NK018417 - WSP - B01 - 01 - DR - S - 001		-	
Project Number Originator - Zone - Level - Type - Role - Drawing Number			
Application Number - TR020002			
Scale	Sheet Size	Sheet No	Status
1:2,500	A1	5 of 5	S. 56



Key Plan
 Scale: NTS

KEY TO TARGET NOTES:
 2. Building providing features suitable for roosting bats
 3. South facing grassy slope provides potential for common reptile species
 4. Continuous scrub provides suitable habitat to support foraging and breeding birds
 5. Hedgerow provides habitat suitable to support foraging and breeding birds
 6. Non-native shrubs provide foraging opportunities for birds

- KEY
- Order Limits
 - Water Framework Directive river water body catchment area (RWCA)
 - Water Framework Directive transitional water body (TWB)
 - Scrub - dense/continuous
 - Scrub - scattered
 - Improved grassland
 - Tall ruderal
 - Arable
 - Amenity grassland
 - Ephemeral/short perennial
 - Introduced shrub
 - Shingles/cobbles
 - Buildings
 - Hardstanding
 - Intact hedge native species poor
 - ! Parkland and scattered trees - broad-leaved
 - 3 Target note

Notes

1. OS Data obtained from emapsite™ May 2017.
 © Crown copyright and database rights 2017
 Ordnance Survey 0100031673
2. This drawing is scaled at paper size A1, therefore any prints taken at smaller sizes will affect accuracy of the measurement units and should not be scaled against. Enlargements are not to scale.
3. The area shown on this plan falls within the River Stour District Catchment Area and the River Stour Management Catchment Area.

0 12.5 25 50 75 100 Meters

Rev	Description	By	Ckd	Apr	Date
P01	Add revision changes.	-	-	-	29/03/2018

Project MANSTON AIRPORT DEVELOPMENT CONSENT ORDER

Title HABITATS OF PROTECTED SPECIES, IMPORTANT HABITATS OR OTHER DIVERSITY FEATURES AND WATER BODIES IN A RIVER BASIN MANAGEMENT PLAN – PLANS REGULATIONS 5(2)(I)(ii) & (iii) INSET 1 TO SHEET 5 OF 5 THANET DISTRICT COUNCIL

Document Number	Revision		
NK018417 - WSP - B01 - 01 - DR - S - 001	-		
Project Number Originator - Zone - Level - Type - Role - Drawing Number			
Application Number - TR020002			
Scale	Sheet Size	Sheet No	Status
1:1,250	A1	1 / 5 of 5	S. 56

